



*jordan* fishwick

MANCHESTER  
Beckton Gardens





## Beckton Gardens, Manchester, M22 9QR

£150,000



### The Property

A three bedroom terrace property IN NEED OF COMPLETE REFURBISHMENT, located at the end of a small walkway off a cul-de-sac in Wythenshawe. In outline :- Entrance hall, living room with bay window, kitchen with storage space off, three bedrooms and the bathroom. There is an enclosed garden at the rear and small flagged area at the front. The location offers easy access to the Motorway network, Metrolink, Manchester Airport, Wythenshawe Hospital and local amenities. \*No Onward Chain\*

### Directions

M22 9QR





- Three bedroom terrace property
- In need of full refurbishment
- Living room with bay window
- Kitchen with storage off
- Bathroom
- Enclosed rear garden
- Paved front area
- Cul-de-sac location
- No onward chain

Postcode - M22 9QR

EPC Rating - D

Floor Area - 737.00 sq ft

Local Authority - Manchester City Council

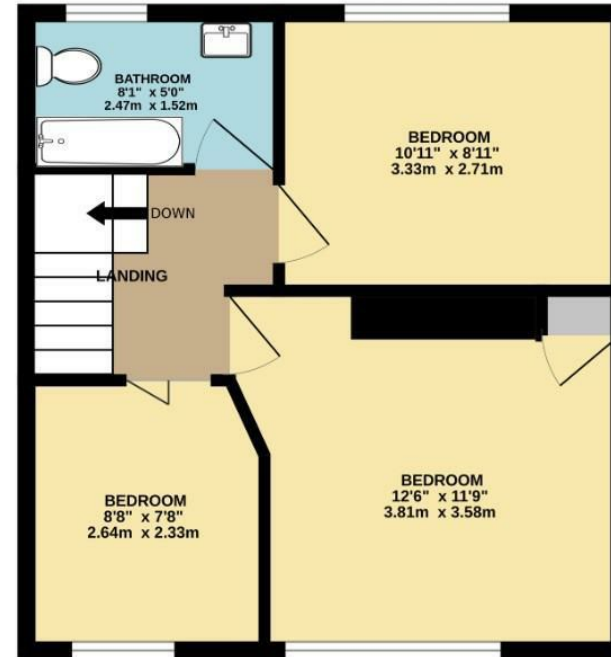
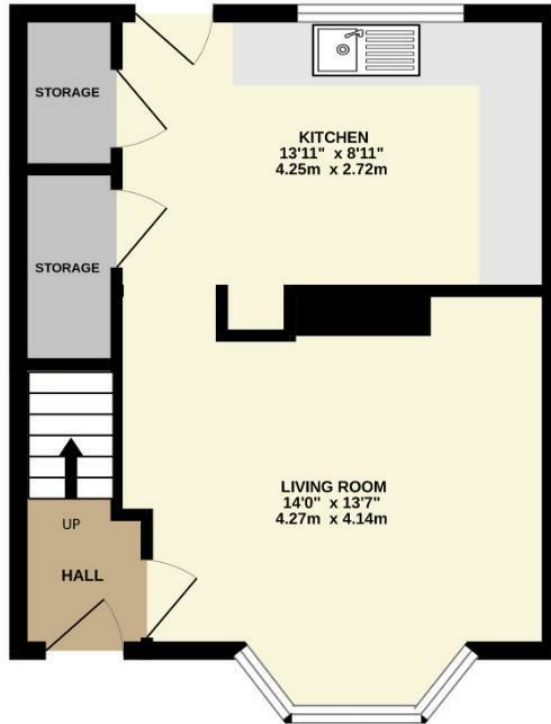
Council Tax - A



GROUND FLOOR  
356 sq.ft. (33.0 sq.m.) approx.



1ST FLOOR  
381 sq.ft. (35.4 sq.m.) approx.



TOTAL FLOOR AREA : 737 sq.ft. (68.4 sq.m.) approx.  
Measurements are approximate. Not to scale. Illustrative purposes only  
Made with Metropix ©2025



These particulars are believed to be accurate but they are not guaranteed and do not form a contract. Neither Jordan Fishwick nor the vendor or lessor accept any responsibility in respect of these particulars, which are not intended to be statements or representations of fact and any intending purchaser or lessee must satisfy himself by inspection or otherwise as to the correctness of each of the statements contained in these particulars. Any floorplans on this brochure are for illustrative purposes only and are not necessarily to scale.

Offices also at: Wilmslow, Macclesfield, Hale, Sale, Chorlton, Glossop, Manchester & Salford

757-759 Wilmslow Road, Didsbury Village, Manchester

0161 445 4480

didsbury@jordanfishwick.co.uk  
www.jordanfishwick.co.uk